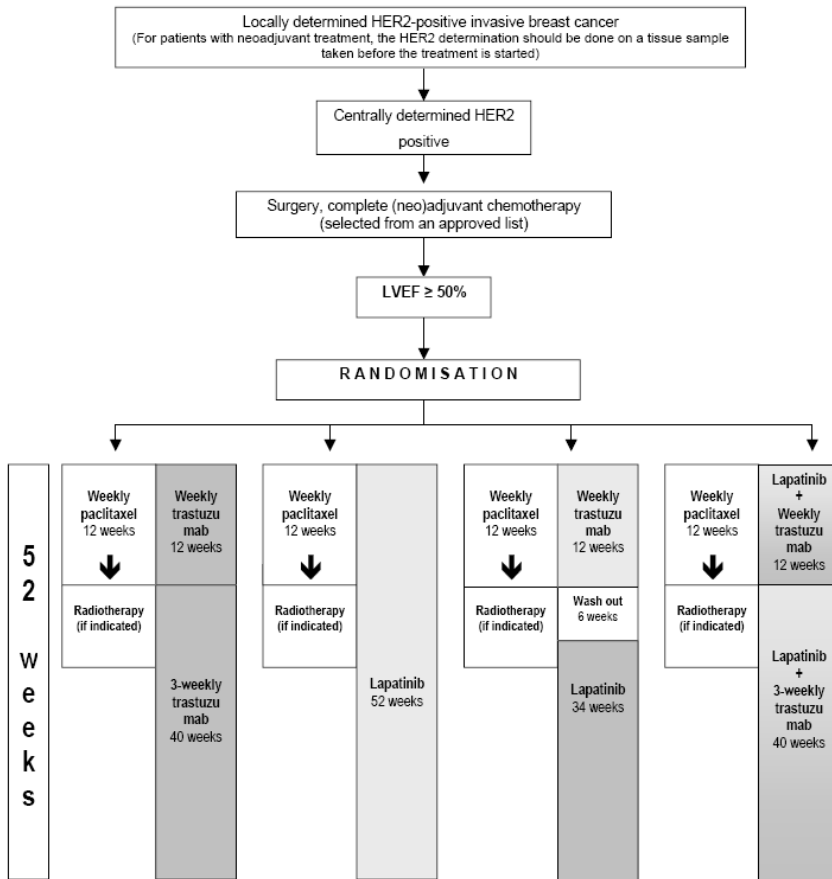


Design 2 - Intention to administer anthracycline-based (neo-)adjuvant chemotherapy followed by taxanes (weekly paclitaxel for all patients; other taxanes schedules may be allowed in the future) - the targeted therapy is initiated after (neo)adjuvant anthracycline-based chemotherapy and given concurrently with weekly paclitaxel



Patients with ER or PgR-positive tumours receive endocrine therapy selected according to menopausal status; endocrine therapy will be started after the end of the chemotherapy, will be administered concurrently with targeted therapies and will be planned for at least five years